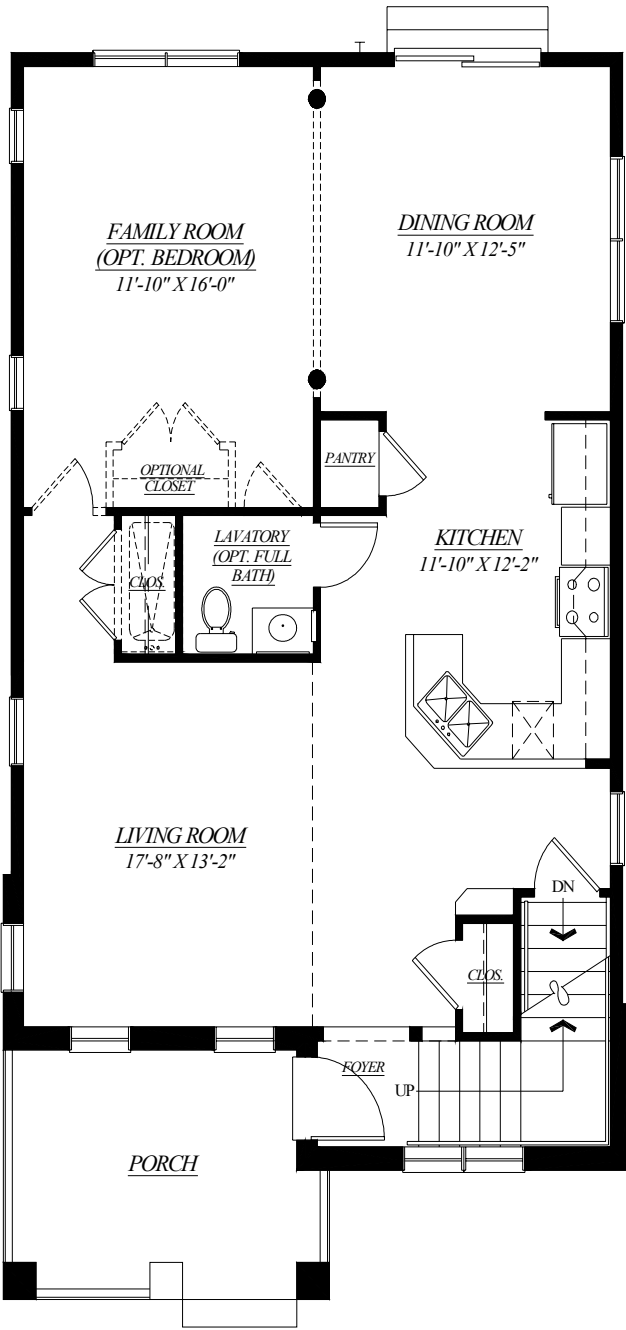


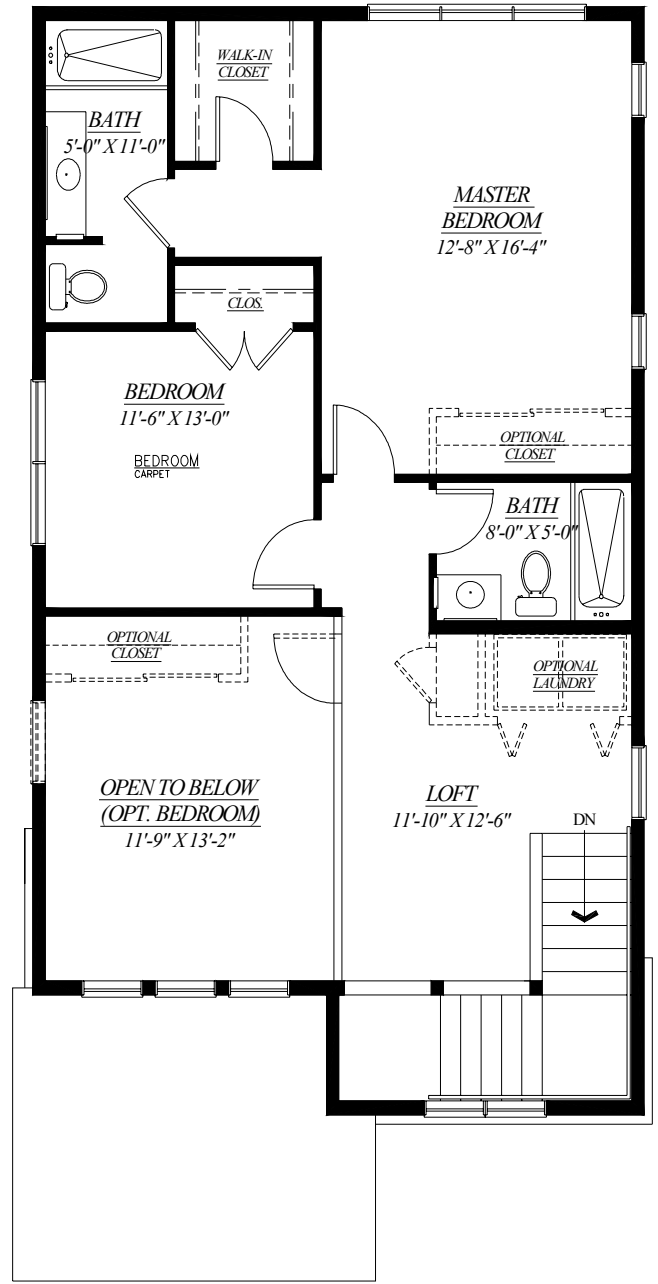
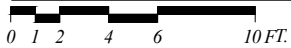
THE 'LEXINGTON'

Single-Family Home



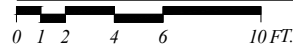
FIRST FLOOR PLAN

960 SQ. FT.



SECOND FLOOR PLAN

730 SQ. FT.



LEAGUE PARK HOMES

A Partnership Between:
 WARD 7 CONSORTIUM FOR ECONOMIC & COMMUNITY DEVELOPMENT
 AND THE FAMICOS FOUNDATION
 city architecture