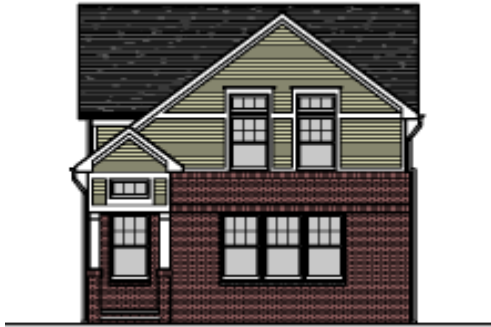


THE 'LEXINGTON'

Single-Family Home



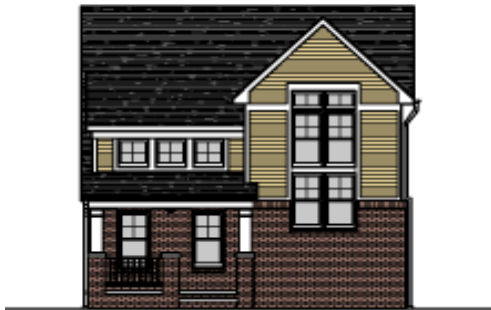
Option 'A'



Option 'B'



Option 'C'



Option 'D'

- 2-4 Bedrooms, 2-1/2 Baths
- 1,690 Square Feet
- Full basement
- Detached 2-car garage
- 2-story Living Room
- Convenient location
- Special financing available
- Much, much, more!

LEAGUE PARK HOMES

A Partnership Between:

WARD 7 CONSORTIUM FOR ECONOMIC & COMMUNITY DEVELOPMENT
AND THE FAMICOS FOUNDATION

city architecture