

THE 'BELVIDERE'

Single-Family Home



Option 'A'

- *3-5 Bedrooms, 2-1/2 Baths*

- *2,160-2,470 Square Feet*

- *Full basement*

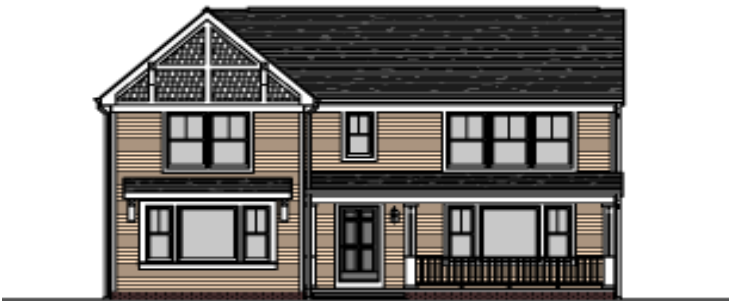
- *Attached 2-car garage*

- *Formal Living & Dining Rooms*

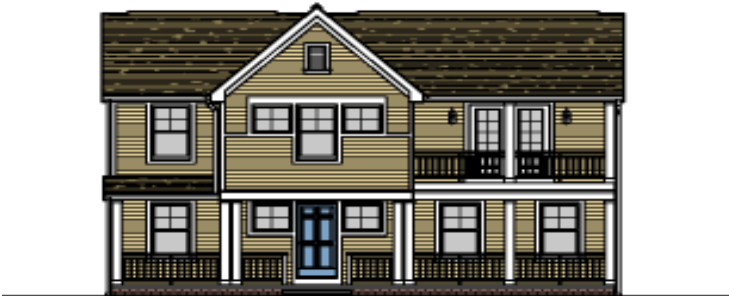
- *Convenient location*

- *Special financing available*

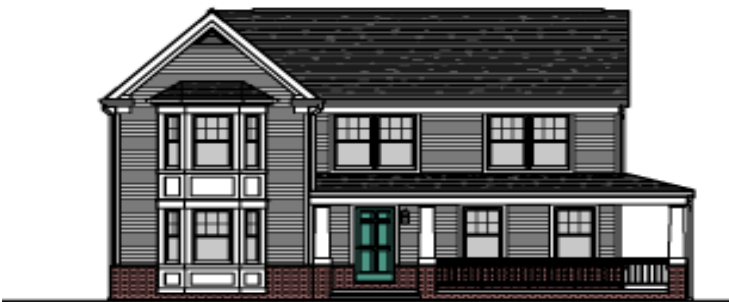
- *Much, much, more!*



Option 'B'



Option 'C'



Option 'D'

LEAGUE PARK HOMES

A Partnership Between:

**WARD 7 CONSORTIUM FOR ECONOMIC & COMMUNITY DEVELOPMENT
AND THE FAMICOS FOUNDATION**

city architecture